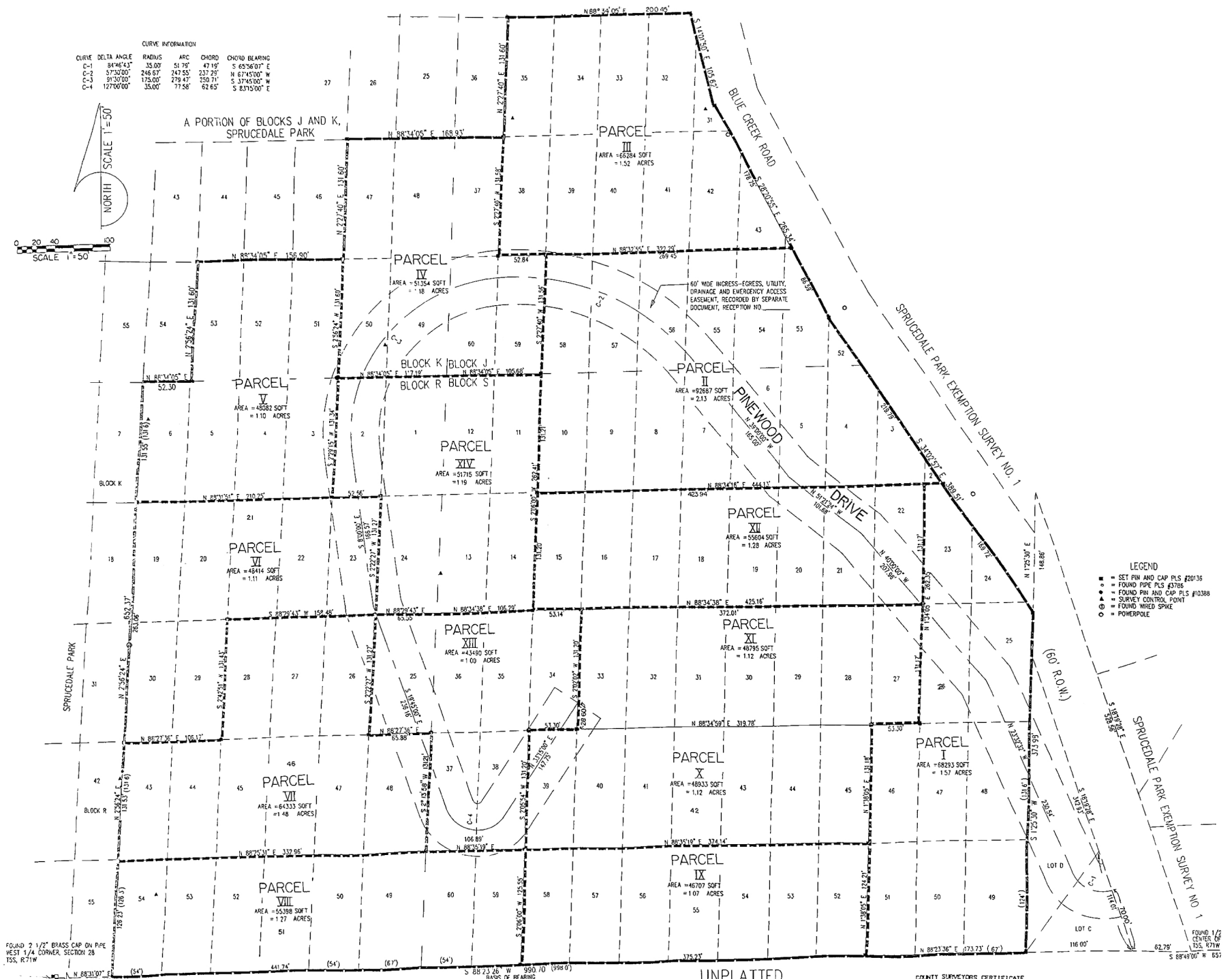
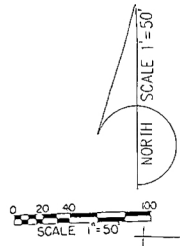


CURVE INFORMATION

CURVE	DELTA ANGLE	RADIUS	ARC	CHORD	CHORD BEARING
C-1	84°46'43"	35.00'	51.75'	47.19'	S 85°56'07" E
C-2	57°33'58"	246.67'	242.55'	237.29'	N 67°45'00" W
C-3	81°03'00"	178.00'	238.43'	159.71'	S 37°45'00" W
C-4	127°06'00"	35.00'	77.58'	62.65'	S 83°15'00" E



- LEGEND
- SET PIN AND CAP PLS #20136
 - FOUND PIPE PLS #3786
 - FOUND PIN AND CAP PLS #10388
 - ▲ SURVEY CONTROL POINT
 - FOUND WREED SPIKE
 - POWERPOLE

FOUND 2 1/2" BRASS CAP ON PIPE WEST 1/4 CORNER SECTION 28 T5S, R71W

FOUND 1/2" CENTER OF T5S, R71W

UNPLATTED

COUNTY SURVEYORS CERTIFICATE

DEPOSITED THIS DAY OF 19 AT IN BOOK OF THE COUNTY SURVEYOR'S LAND SURVEY PLATS/RIGHT OF WAY SURVEYS AT PAGE RECEPTION NUMBER